



# Disability and Computing

Terrill Thompson, [tft@uw.edu](mailto:tft@uw.edu)



# The Alliance for Access to Computing Careers



**UW Department of  
Computer Science &  
Engineering**



**DO-IT  
(Disabilities,  
Opportunities,  
Internetworking &  
Technology)**

# Goal


- To increase the participation of students with disabilities in computing careers.

# Google agrees.

Lime - boundless ability


http://www.limeconnect.com/google.html


Skip to Content | Text version | Text Size: A A A

  
boundless ability

**fact // 1.2 billion people globally report having a disability, and people with disabilities in the U.S. control aggregate annual income of > \$1 trillion\***

HOME  
UPCOMING EVENTS  
DELIVERING RESULTS  
BREAKING THE MOLD  
ABOUT US  
CONTACT US  
ACCESSIBILITY  
SUPPORT OUR WORK  
LIME IN THE



  
boundless ability

**Google Lime Scholarship for Students with Disabilities**

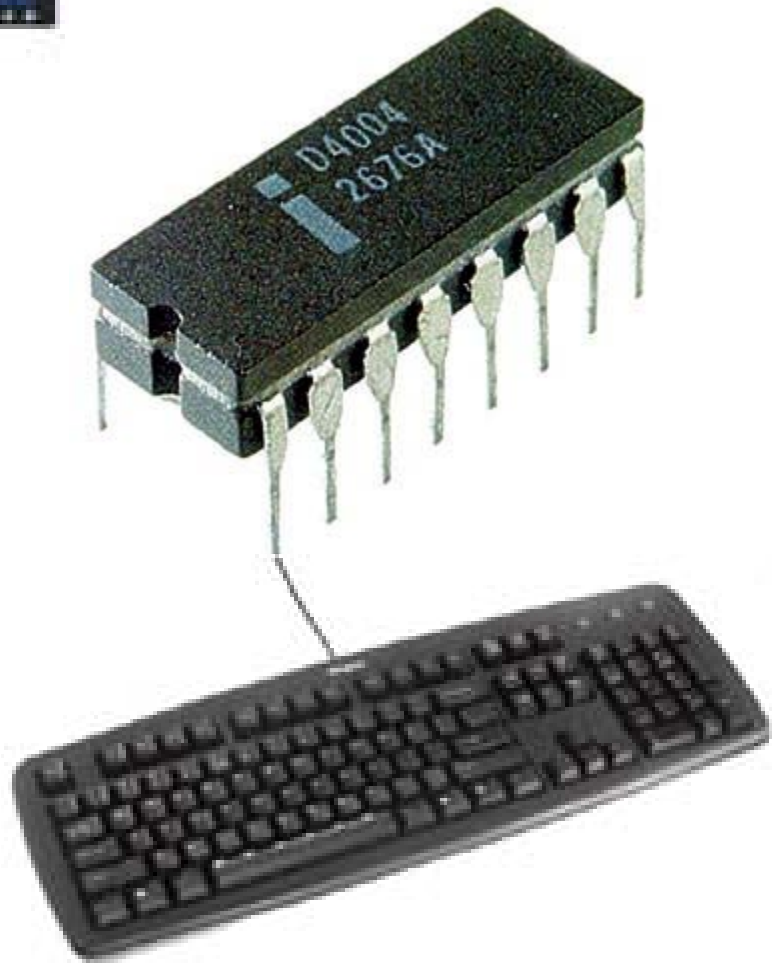
Access to knowledge is our thing. When it comes to higher education for promising scholars, we don't want anything to stand in the way. That's why we're proud to partner with Lime. Google is committed to helping the innovators of the future make the most of their talents by providing

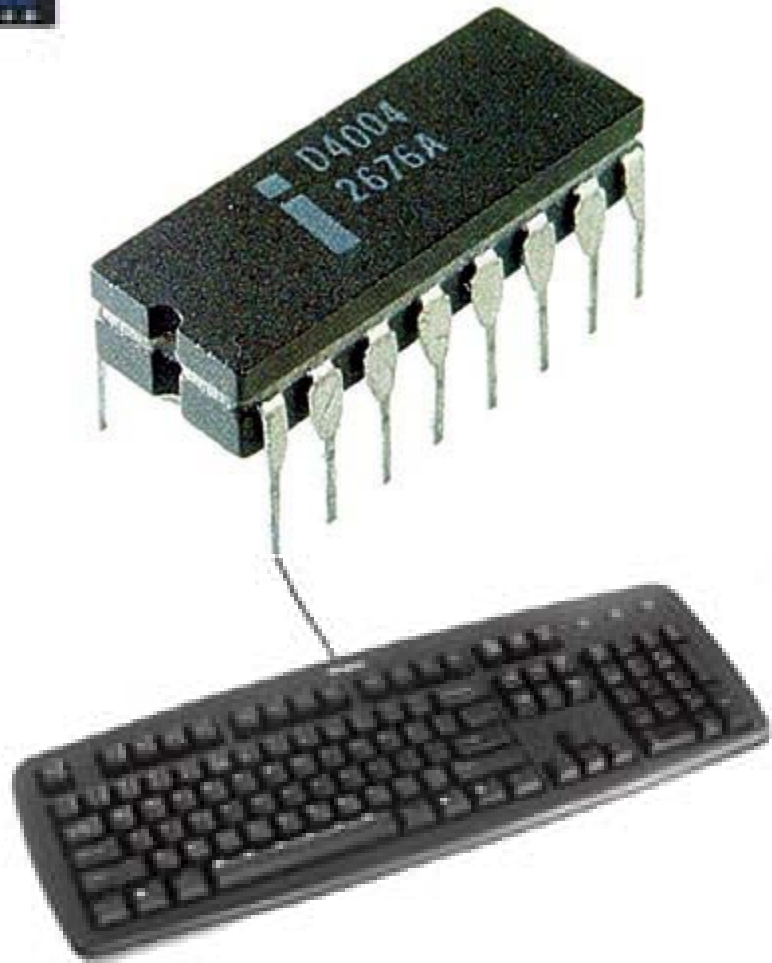
# Barriers to Success

- Diminished/different support systems at different academic levels
- Little access to successful role models
- Inadequate self-advocacy skills
- Lack of access to technology that can increase independence, productivity, & participation
- Inadequate accommodations
- Low expectations & other negative attitudes on the part of people with whom they interact

- *National Organization on Disabilities*

Lack of access &  
Inadequate accommodations













This machine is reserved for users with disabilities only. Please see ATL staff for access.

DYMO  
LabelWriter  
EL50

FLEXPRG





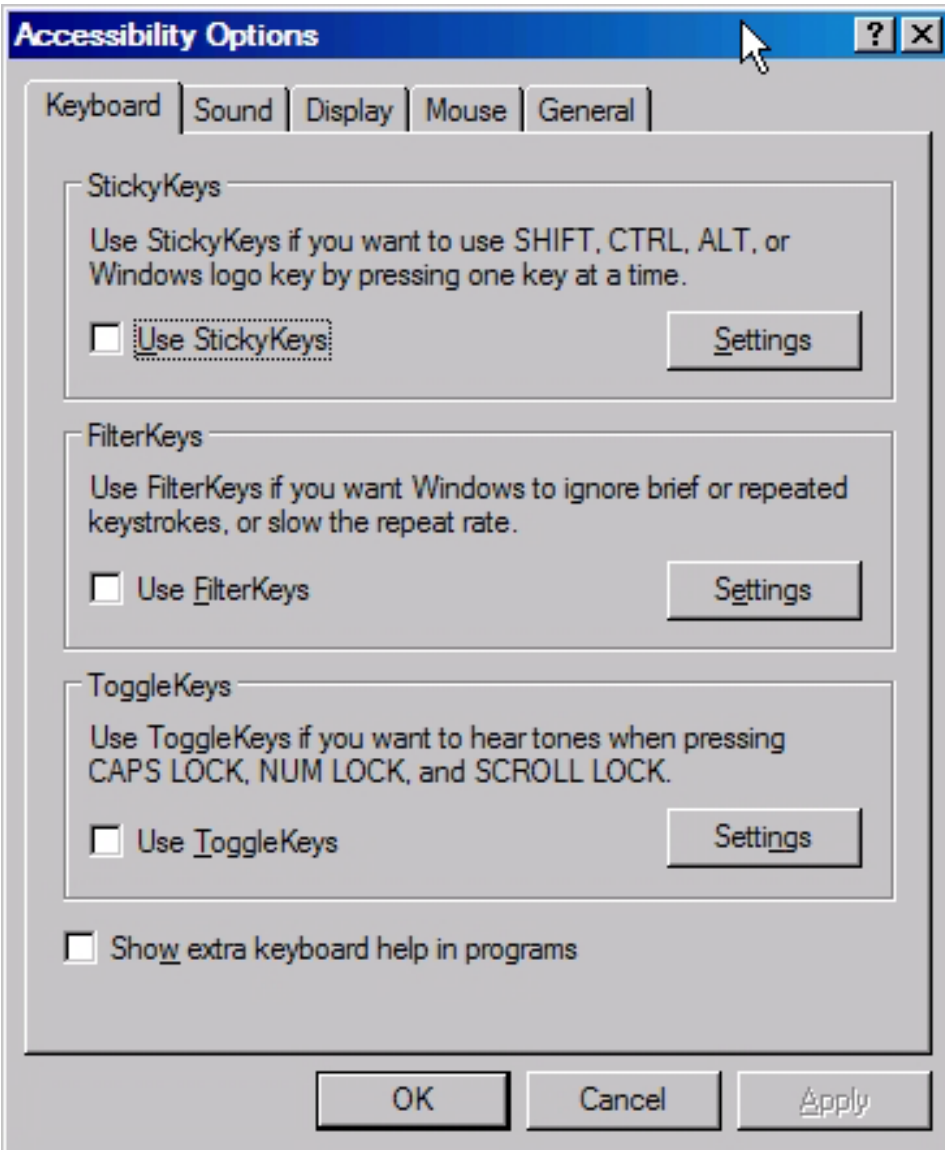




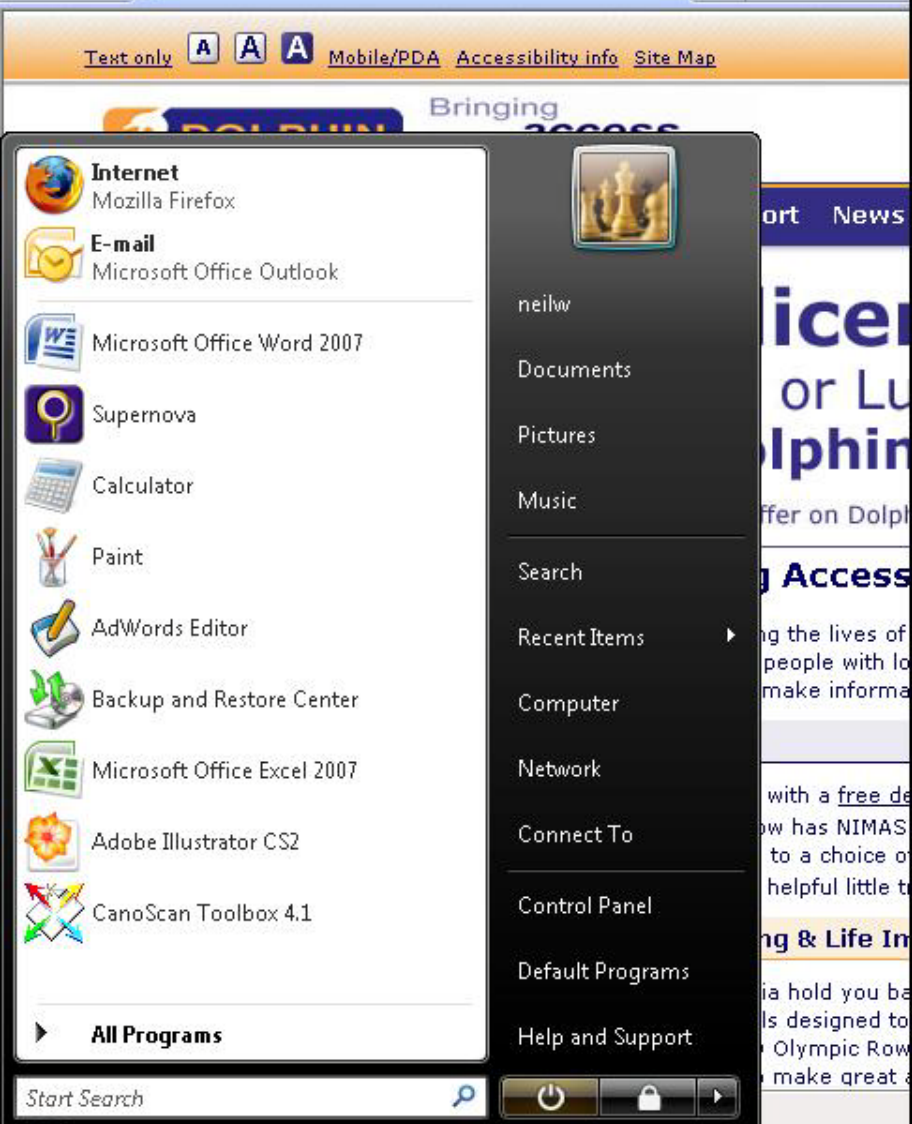












Microsoft Office Excel 2007



Adobe Illustrator CS2



CanoScan Toolbox 4.1



**All Programs**

Start Search







By a similar argument, if the region bounded by the y-axis and the horizontal lines  $y = c$  and  $y = d$  is rotated about the y-axis, then the volume of the resulting solid of revolution is given by the formula:

$$V = \int_c^d \pi x^2 dy = \int_c^d \pi [g(y)]^2 dy$$

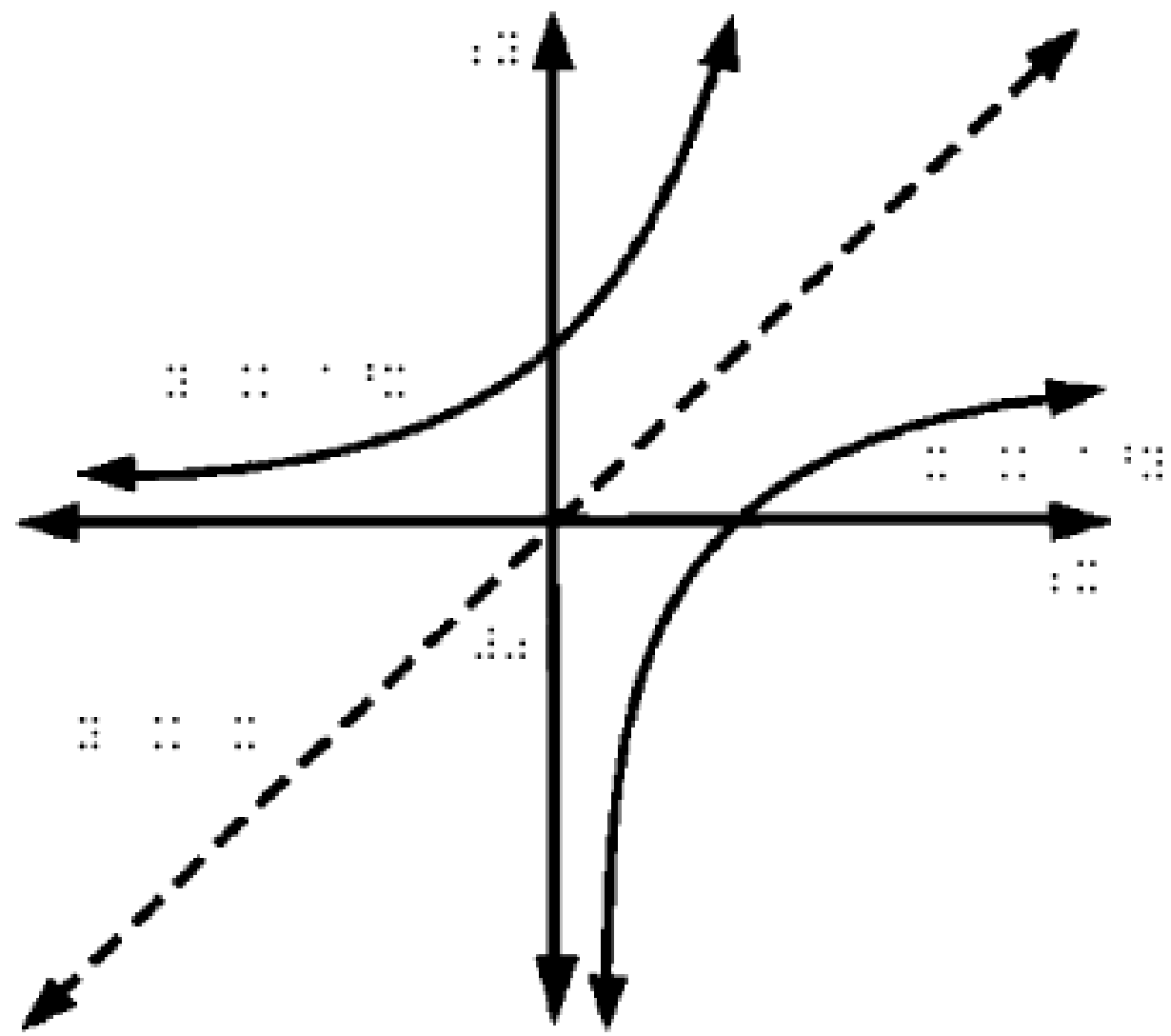
We must express  $x$  (and any other dependent variable) in terms of the independent variable  $y$  before we attempt to antidifferentiate.

6.4.2F Solid of revolution about the y-axis

Fig. 6.29 (a) A semicircular region that we rotate (b) Example 2

**EXAMPLE 2** Use the method of cross sections to find the volume of a sphere of radius  $r$ .

.....



.....

Assistive technology  
may be part of the  
solution, but AT alone  
does not remove all  
barriers.





# Information Resources Management Association

...an international association serving information providers and users

701 E. Chocolate Avenue, Suite 200, Hershey, PA 17033, USA

[contact us](#) | [home](#)

[IRM Press](#)

[Conferences](#)

[Joining IRMA](#)

[IRMA Journals](#)



[About Us](#)

[Leadership](#)

[World-Wide Reps](#)

[Fellow Programs](#)

[Proceedings](#)

[Curriculum](#)

[SRCs](#)


[List-Serve](#)

[What's New](#)

## Image Tag Accessibility Attributes



Alternate text:

Long description:  

If you don't want to enter this information when inserting objects, [change the Accessibility preferences.](#)

OK

Cancel

Help



Well, here we are obviously in front of our nation's capitol.

[About the UW](#)



[Academics and Research](#)

[Admissions](#)

[UW Medicine](#)

[Uniquely Washington](#)

[UW Administration](#)

[Governance](#)

[Visit the UW](#)

[Diversity](#)

[UW Events](#)

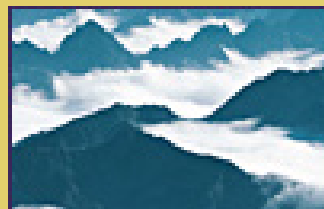
[Museums and Exhibits](#)

[Emergency Information](#)

# PROVOST CROWNHILL

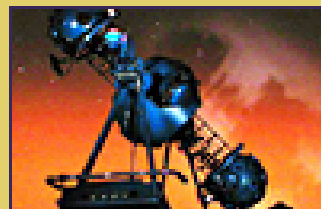
*Students are invited to a discussion about the role the UW and you play in understanding*

**Info**



## The Weather of the Pacific Northwest

New book by UW atmospheric sciences professor explains many phenomena of the region. **More >**



## Starry Nights

You can still "see" the winter at twice-monthly events at the Astronomy Department Planetarium. **More >**

[UW QuickLinks](#)

[News](#)

[News from the University of Washington](#)



[Book challenges conventional wisdom](#)





## Grade Center ▼

In the [screen reader view](#), the table is static and grades may be entered on the Grade Details page accessed by selecting the table cell for the grade. In the interactive view of the Grade Center, grades can be typed directly in the cells. Use the arrow keys or the tab key to navigate through the Grade Center and the Enter key to submit a grade.

[Create Column](#)[Create Calculated Column](#) ▼[Manage](#) ▼[Reports](#) ▼[Work Offline](#) ▼Current View: [Full Grade Center](#) ▼[Set as Default](#)Sort Columns By: [Layout Position](#) ▼Order: [▲Ascending](#) ▼






Grade Information Bar

Grade Type: **Weighted Grade** | Points Possible: **100** | Displayed As: **Letter** | Visible to Users: **Yes**[Move To Top](#)[Email](#) ▼[Icon Legend](#)

<input type="checkbox"/>	Last Name <span>▼</span>	First Name <span>▼</span>	Username <span>▼</span>	Student ID <span>▼</span>	Last Access <span>▼</span>	Availability <span>▼</span>	Weighted Gr: <span>▼</span>	Attendance <span>▼</span>
<input type="checkbox"/>	Copy	Ian	icopy		July 10, 2008	Available	B	85.00%
<input type="checkbox"/>	Cruz	Cindy	ccruz		September 15, 2008	Available		
<input type="checkbox"/>	Goldman	Greg	ggoldman		July 10, 2008	Available		
<input type="checkbox"/>	Holland	Hector	hholland		July 10, 2008	Available		
<input type="checkbox"/>	Jacobs	Jake	jjacobs		July 10, 2008	Available		
<input type="checkbox"/>	Jones	Jeremy	jjones		July 10, 2008	Available		

- > View User Statistics
- > Browse Adaptive Release Status
- > Email User
- > Hide User

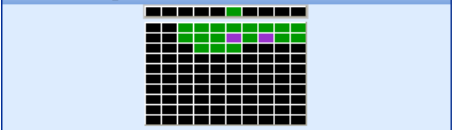
 Terry Thompson  
Technology Specialist  
DO-IT

-  Terry ■
-  Andy ■
-  Bobbie ■
-  Bucky ■
-  ckb ■

Call Someone

More Choices >>

Search list for person:



Feedback to Presenter

Proceed

- Preparing for a Meeting
- Setting up your user preferences
  - Connecting to audio
  - Chatting
  - Switching to full screen view
- ➔ Next: Attending a Meeting

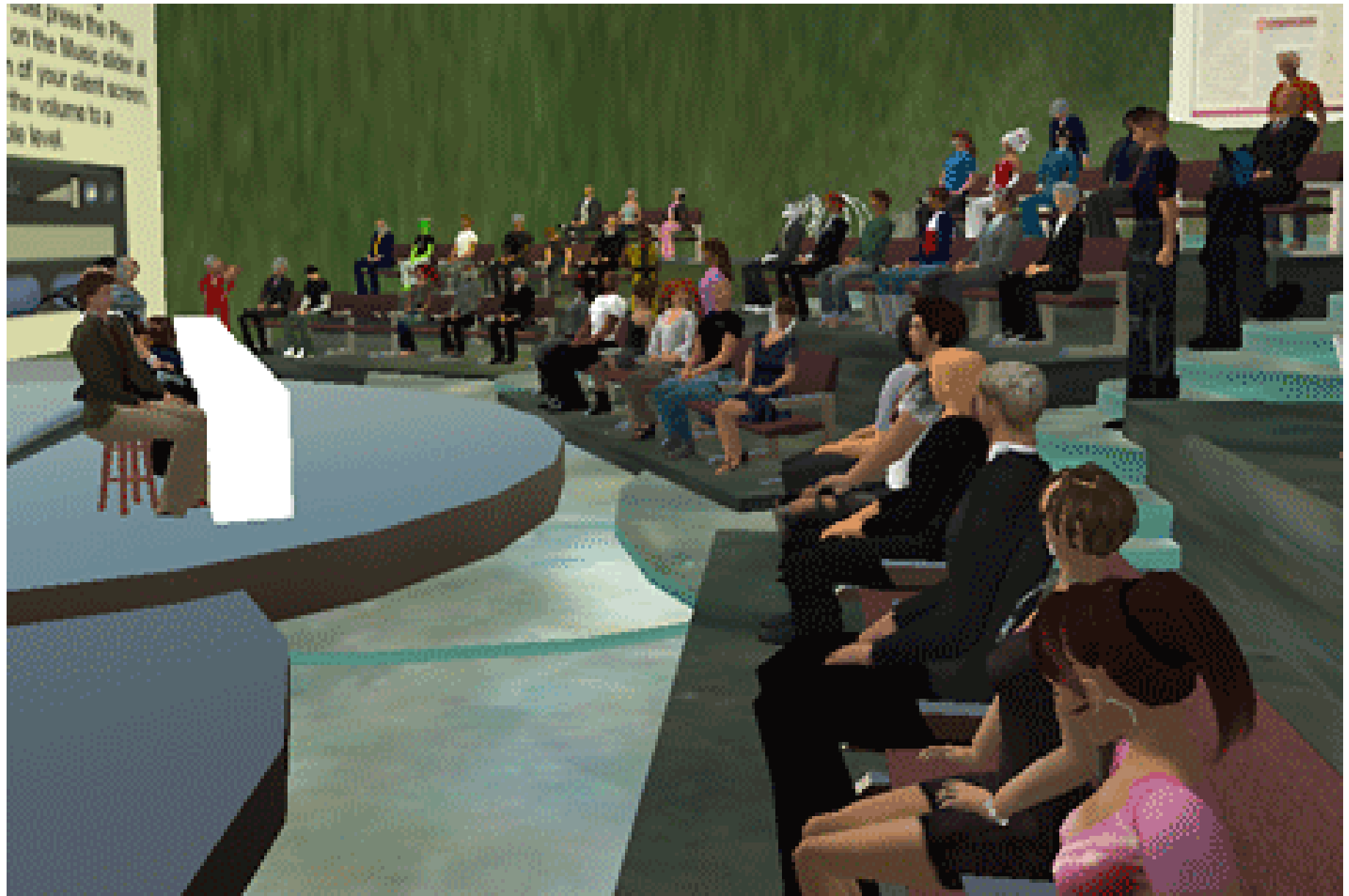
# IT Accessibility

Terry Thompson  
Technology Specialist  
DO-IT & AccessIT  
University of Washington  
[tft@u.washington.edu](mailto:tft@u.washington.edu)

**Questions and Answers**

No questions have been answered yet in this meeting.

Is this application accessible?



...press the Play  
on the Music slider at  
of your client screen,  
the volume to a  
level.

...

As we create, purchase,  
teach, and use new  
technologies, how can we  
ensure that they don't erect  
new barriers?

# Legal Requirements

- Section 504 of the Rehabilitation (1973)
- Americans with Disabilities Act (1990)
- Section 508 of the Rehabilitation Act,  
Amended in 1998

# Guidelines & Standards

- W3C Web Content Accessibility Guidelines 2.0
  - Perceivable
  - Operable
  - Understandable
  - Robust
- Section 508 Standards

# Barriers to Success (Revisited)

- Diminished/different support systems at different academic levels
- Little access to successful role models
- Inadequate self-advocacy skills
- Lack of access to technology that can increase independence, productivity, & participation
- Inadequate accommodations
- Low expectations & other negative attitudes on the part of people with whom they interact

- *National Organization on Disabilities*

# Exploring This Problem Today

- Student Perspective
- Other Stakeholders
  - What can we do to help?
  - How can we collaborate?
- Everyone
  - What are the problems?
  - What are the solutions?
  - What are the next steps?